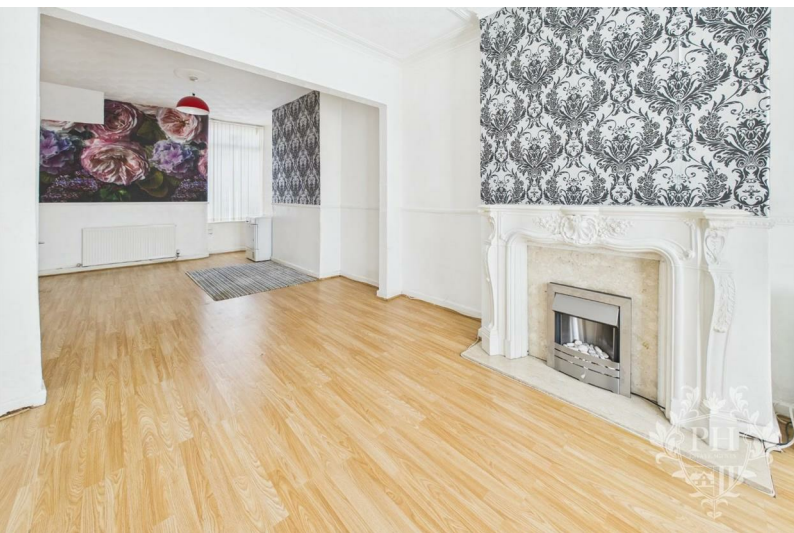
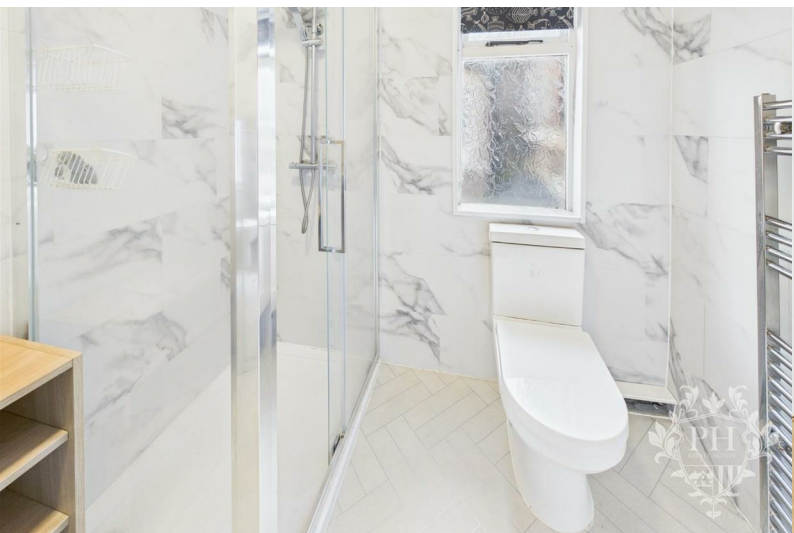




119 Kings Road
, North Ormesby, TS3 6EY

£650 PCM



119 Kings Road

, North Ormesby, TS3 6EY

£650 PCM



Entrance Hall

9'9" x 2'10" (2.98 x 0.88)

Stepping through the white wooden door from the cozy, flower-lined garden, you find yourself in a sunlit hallway. Warm light spills across polished floors, guiding you toward the welcoming reception and dining room on one side, and a staircase that leads gracefully up to the first floor.

Open Plan Living/Dining Room

27'5" x 10'5" (8.37 x 3.18)

At the front of the room, you'll find a spacious living area, large enough to comfortably accommodate a two-piece sofa set along with extra storage units. This inviting space features a sizable window that lets in plenty of natural light, a classic radiator to keep things cozy, and a charming fire surround housing a traditional coal fire—perfect for relaxing evenings. Toward the back of the room, the dining area offers ample room for a full-sized dining table and is equipped with its own window and an additional radiator to ensure warmth. From here, you can easily access the kitchen, as well as a convenient understair storage cupboard, providing plenty of options for organization and daily living.

Kitchen

14'6" x 9'2" (4.44 x 2.81)

Tucked away at the back of the house, the kitchen features a striking collection of navy cabinets—wall-mounted, base, and deep drawers—that offer plenty of storage and a bold pop of color. The light countertops create a crisp contrast against the rich cabinetry, while a built-in oven sits neatly below a sleek electric hob, giving the space a modern, functional feel. There's ample room for your own free-standing appliances, whether it's a dishwasher or a roomy fridge. Natural light pours in through a window overlooking the rear yard, and a door beside it opens directly outside, making it easy to step out with your morning coffee or bring in groceries. A radiator keeps the room cozy year-round.

split level landing

The split level landing gains access to the three spacious bedrooms and family bathroom.

Bedroom One

15'5" x 12'9" (4.71 x 3.91)

The first bedroom is located at the front of the house, where sunlight pours in through two large windows, creating a bright and

welcoming atmosphere. The space is generous enough to comfortably fit a double bed, and features built-in wardrobes that provide ample storage without sacrificing floor space. A radiator keeps the room cozy year-round.

Bedroom Two

11'10" x 8'7" (3.62 x 2.63)

The second bedroom sits at the heart of the first floor, offering plenty of space for a double bed as well as larger wardrobes or dressers. Soft carpeting covers the floor, creating a cozy feel, while a window lets in natural light during the day. A radiator ensures the room stays comfortable year-round.

Bedroom Three

7'4" x 9'4" (2.26 x 2.85)

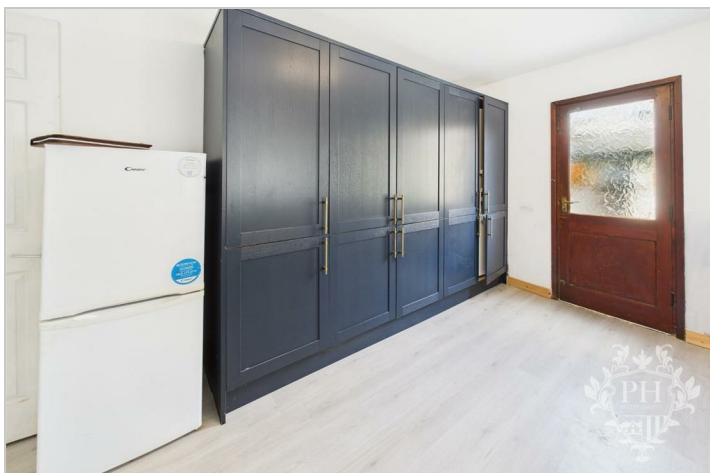
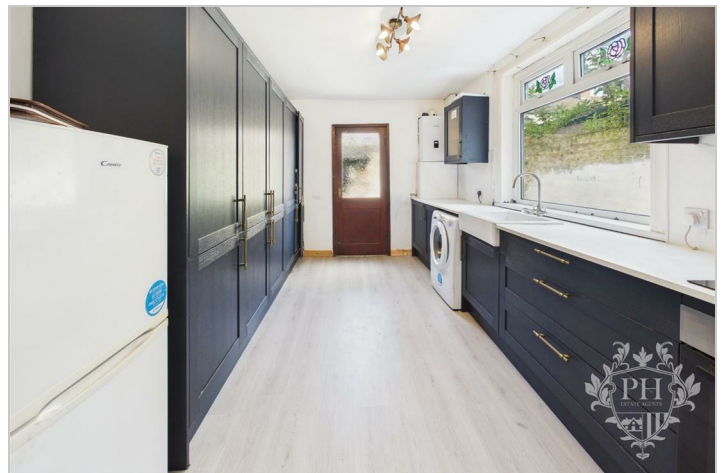
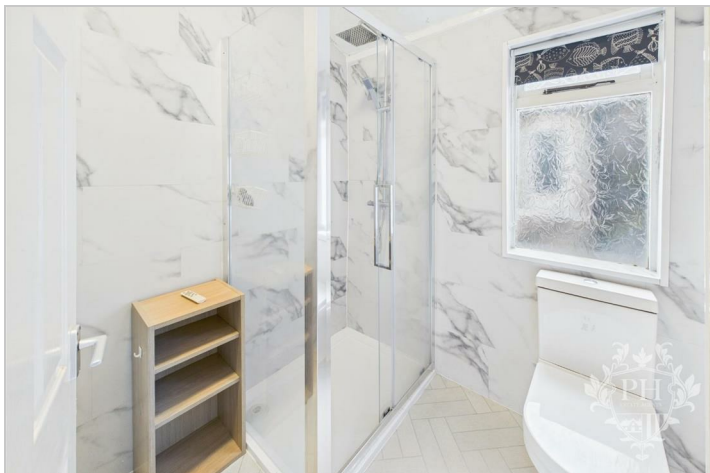
The third bedroom is tucked away at the back of the property, offering a quiet retreat with

just enough room for a single bed and a few larger storage pieces. Natural light filters in through the window, while a radiator keeps the space warm and cozy. The soft carpeting underfoot adds a touch of comfort to this compact, private corner of the home.

Shower Room/WC

5'1" x 6'8" (1.55 x 2.05)

The bathroom features a sleek, contemporary three-piece suite, including a spacious walk-in shower cubicle fitted with a glass screen and a thermostatic shower for precise temperature control. A stylish hand basin and a low-level toilet complete the set. Modern wall tiles add a fresh, polished look, while a chrome heated towel rail offers both warmth and convenience. Natural light filters in gently through a frosted window, ensuring privacy without sacrificing brightness.



Road Map



Hybrid Map



Terrain Map



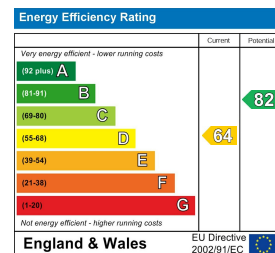
Floor Plan



Viewing

Please contact our Middlesbrough Office on 01642 462153 if you wish to arrange a viewing appointment for this property or require further information.

Energy Efficiency Graph



These particulars, whilst believed to be accurate are set out as a general outline only for guidance and do not constitute any part of an offer or contract. Intending purchasers should not rely on them as statements of representation of fact, but must satisfy themselves by inspection or otherwise as to their accuracy. No person in this firm's employment has the authority to make or give any representation or warranty in respect of the property.